

FALL 2020

# PAPER SHREDDING EVENTS

**SUNDAY**  
**OCTOBER 18**  
and  
**SUNDAY**  
**NOVEMBER 15**

Both events are from 9 AM until 1 PM\*  
**RAIN OR SHINE**

**Burlington County  
Resource Recovery Complex** (Landfill)  
22000 Burlington-Columbus Road  
Florence, NJ 08518 (Exit 52A off I-295)

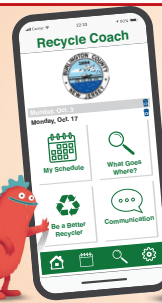
**\*EVENTS MAY END PRIOR TO 1PM IF  
SHREDDING TRUCKS REACH CAPACITY.**

Many of us, cooped up due to Covid-19, sorted old files for confidential papers to shred.

*We are here to help with two fall events.*

*Please follow our guidelines,  
so that we may safely offer this free service.*

*– Felicia Hopson,  
Burlington County Board  
Director*



**Find Paper Shredding  
dates and more!**



Download the **FREE** app today!



- ✓ You must remain in your car; masks will be required at all times.
- ✓ Paper must be placed in trunk, cargo area or truck bed, easily accessible to staff, who will remove it from the vehicle.
- ✓ Limit of 4 bags/boxes of unshredded paper weighing no more than 10 lbs. each. Shredded paper is also accepted.
- ✓ Confidential files only; no magazines or junk mail.
- ✓ No businesses or non-profits.

**BURLINGTON COUNTY RESIDENTS ONLY. IDENTIFICATION REQUIRED.**

Questions? Call **(609) 499-1001 ext. 271 or 266**  
or email **recycle@co.burlington.nj.us**